



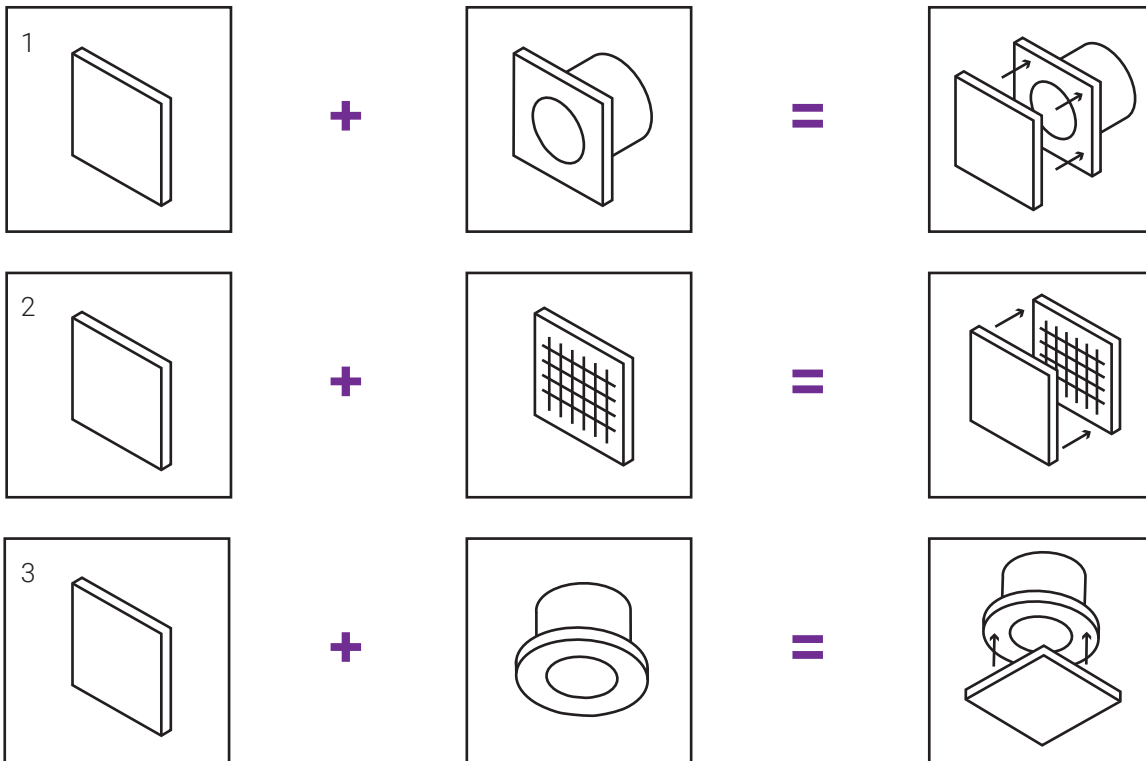
# **DESIGN SOLUTIONS**

FOR DOMESTIC  
VENTILATION



# ■ ABOUT DESIGN CONCEPT

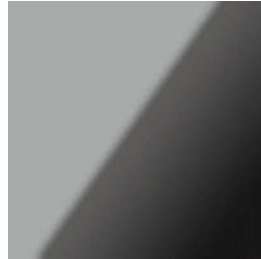
Design Concept is a series of design fans from VENTS, the world's leader in domestic ventilation. A variety of universal removable front panels **allows choosing the design of a fan or ventilation grille for any interior of a bathroom or kitchen**. High quality of VENTS fans, possibility of wall and ceiling mounting, huge selection of front panel decors - all this in the new series of VENTS Design Concept fans.



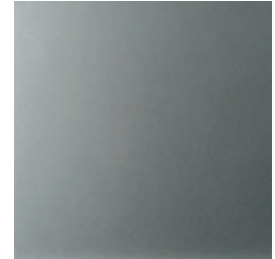
# ■ CONTEMPORARY STYLE



Plain



Plain black sapphire



Plain metallic



Plain wing



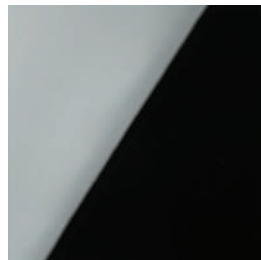
Mystery



Disc

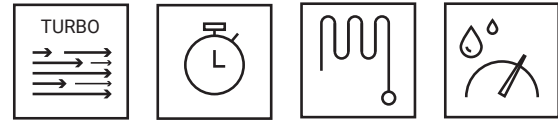


Glass

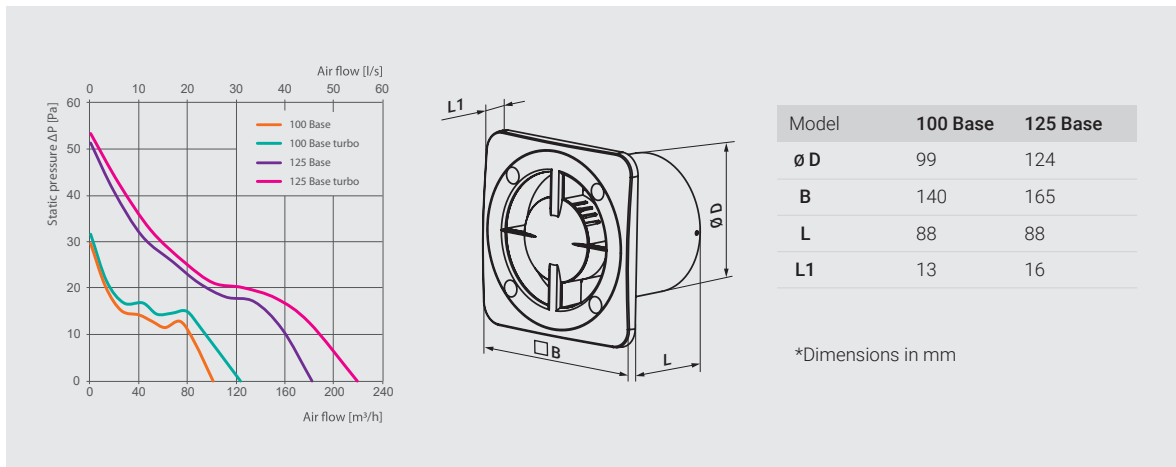


Glass black

# BASE FAN



Model	100 Base (turbo)	125 Base (turbo)
<b>Power [W]</b>	<b>14(15)</b>	<b>16(17)</b>
<b>Maximum air flow [m³/h]</b>	<b>100(122)</b>	<b>180(217)</b>
<b>Sound pressure level at 3 m distance [dBA]</b>	<b>34(36)</b>	<b>35(37)</b>
Frequency [Hz]	50/60	50/60
Voltage [V]	220-240	220-240
Current [A]	0,09(0,1)	0,12(0,13)
RPM [min <sup>-1</sup> ]	2300(2400)	2400(2500)
SFP [W/l/s]	0,5(0,44)	0,32(0,28)
Ingress protection rating	IP24	IP24





The producer reserves the exclusive right to modify the construction, design and specifications as well as alter the components of its products at any time without prior notice.



[www.ventilation-system.com](http://www.ventilation-system.com)